

2022 Annual Report

UPWARD WING CHRISTIAN SCIENCE NURSING



Upward Wing, LLC, is a wholly owned subsidiary of Overlook House, Inc., a 501(c)(3) organization.



Christian Science Nursing :
1-855-CSN-4YOU (276-4968)
Business Office: (216) 795-3550
3460 Ridgewood Rd, Fairlawn, OH

Did you know that our organization's name, Upward Wing, was inspired by our Leader's poem, "Mother's Evening Prayer"?

*O gentle presence, peace and joy and power;
O Life divine, that owns each waiting hour,
Thou Love that guards the nestling's faltering flight!
Keep Thou my child on upward wing tonight.
(Poems, Mary Baker Eddy, p. 4:1)*

In another of her beloved poems, "Love" (Poems, Mary Baker Eddy, p. 6:1), God's wing shelters us and our "brother birds" soar and sing with us and "on the same branch bend." Obviously, Mrs. Eddy saw the gentle care and joy of fellowship expressed by these dear creatures as an example of how we both care for each other and are cared for in turn.

We explored this idea in depth at our annual meeting in November. Excerpts and citations from the inspirational address presented by Elise McCurties is available on our newly updated website: www.upwardwing.org.

Our new home at The Cottage has continued to bless our ministry. In this report we are pleased to share updates on the final phases of construction and highlights of the following programs we have lovingly provided to our community in 2022:

- Christian Science Nursing Care
- Christian Science Nursing Support
- Brother Bird and Volunteer Programs

We hope you enjoy reading about the blessings Upward Wing is providing for the community and seeing how beautifully our needs are being met through your support. If you are interested in contributing to Upward Wing's mission of LOVE, please call us at 1-216-795-3550 or visit our website for donation instructions and volunteer opportunities.

Lovingly,

Carol Stocking
President

Sonia Jakse Barone
Secretary

Richard Warsinskey
Treasurer

Kimberly Thorndike
Executive Director
Director of Christian Science Nursing
Trustee Ex-Officio



The Mission of Upward Wing Christian Science Nursing is LOVE - providing compassionate, skilled Christian Science nursing care to those relying on Christian Science for healing, nurturing those called to the ministry of Christian Science nursing through training and mentoring, and bearing witness to the Christ in action, meeting the human need.



Christian Science Nursing

A Christian Science nurse demonstrates those qualities that Mary Baker Eddy outlines on page 395 of *Science and Health with Key to the Scriptures*: “cheerful, orderly, punctual, patient, full of faith, — receptive to Truth and Love.”

Our Christian Science nurses have provided skilled care in Ohio and surrounding states this year. One of the highlights was when our Director of Christian Science Nurses Training and our Level 4 student served at Camps Leelanau-Kohahna in Michigan.



Christian Science Nurse's Training

Upward Wing offers a two-week Visiting Christian Science Nursing mentorship. This program gives the mentee, whether a student or a *Journal*-listed Christian Science nurse, a guided opportunity to develop their ministry by introducing them to the workings of a visiting Christian Science nursing service and, when appropriate, the experience of caring for someone in their home.

We had students from across the US and abroad. Upward Wing trainers instructed students on site while our Cottage provided accommodations. We have developed relationships and networks with these individuals that foster continued support for both Upward Wing and the individual's unique ministry.

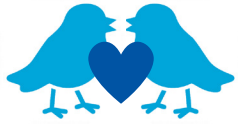
In July, Upward Wing was invited to teach Level 1 Christian Science Nursing in South Africa and in August mentored a *Journal*-listed Christian Science nurse from Europe at the Cottage. During 2022 we contracted with our neighbor organization, Glenmont, in Hilliard, Ohio, leasing an Upward Wing Christian Science nursing student and staff member for one week each month. We're pleased to announce that this student completed Level 4 training, graduating at the close of 2022.



Christian Science Nursing National Support Service

We are delighted to share that our on-call service, now formally known as the National Christian Science Nursing Support Service, has been blessing individuals and families from coast to coast. This service is staffed by a Christian Science nurse 24/7 to attend to immediate needs locally and to work to find care solutions for those who are further afield. Our first goal is to connect a need with a local resource. However, much of our time is dedicated to assisting patients looking for care with an available private-duty Christian Science nurse.

Upward Wing does not employ these private-duty Christian Science nurses, but when we find that a Christian science nurse has availability, we share their name with the caller or their family/Health Care Power of Attorney, so that they may call and make their own arrangements. We have found that it takes hours and sometimes days to search and find an available care provider. Taking the time and making these calls is our way of witnessing God's ever-present love and care for His children.



Brother Bird and Volunteer Programs

In the spirit of being better “brother birds,” we have re-committed ourselves to embracing our Church family by the initiation of the Brother Bird program. Our goal is to engage every church or society within Upward Wing’s service area through establishing a dedicated liaison. These “brother birds” have agreed to help maintain an open line of communication so that together we can better understand and support the Manual-directed activity of Christian Science nursing.

Our volunteers continue to be an appreciated support to our ministry. If you have a particular love and talent, please consider sharing it with us. Joy permeates this precious work!



The Cottage

The Cottage of Upward Wing has enabled us to be more efficient and to better care for our Christian Science nurses by providing a centralized location that enhances our services within a gracious and lovely setting.

Late in 2022 we began the final phase of the building renovations which involves transforming the lower level into administrative offices and meeting space. The work and funding have been unfolding day-by-day and we look forward to its fruition in 2023.



Financial Report

In recent years the value of our investment fund had increased. In fact, the value went up about \$932,000 from the beginning of 2019 to the beginning of 2022. With the drop in stocks and bonds during 2022, the value of our investment fund went from \$4,703,904.53 at the beginning of 2022 to \$3,550,162.44 at the end of 2022. In recent years we were able to draw on the increase in our investment value to cover expenses. This was not possible in 2022 and thus we had to draw from the core investments to cover some of our expenses.

We continue to apply for grants to help support our expenditures, and very much appreciate the contributions given to Upward Wing and Overlook House. These contributions are essential in helping support the mission of Upward Wing.

We also want to note that Upward Wing charges a modest fee for Christian Science nursing care. We are so grateful for the National Fund for Christian Science Nursing that is available to provide financial assistance for those in need. At this time, Upward Wing continues to provide local mileage, basic care supplies, and the time spent for the National Support Service at no charge.

*All good, where'er it may be found,
Its source doth find in Thee;
I must have all things and abound,
While God is God to me
(Christian Science Hymnal, 224:2)*